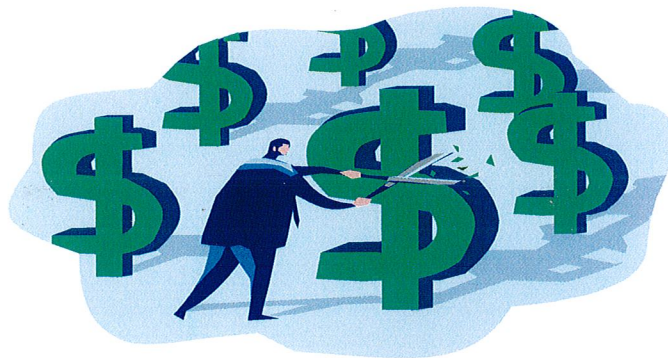


# **NORTH CORNWALL TOWNSHIP 2015 ANNUAL BUDGET**



NORTH CORNWALL TOWNSHIP, LEBANON COUNTY, PA.  
2015 GENERAL FUND BUDGET

Account #	Account Title	2015 Revenues
100	Utilization of Cash Reserve	0
301	Real Estate Property Taxes	1,060,000
310	Local/Per Capita Taxes	1,230,200
321	Bus. License and Permits	89,600
322	Non-Business Licenses and Permits	2,600
331	Fines	58,600
341	Interest Earnings	1,650
342	Rents and Royalties	19,000
354	State Capital and Operating Grants	22,500
355	State Shared Revenue and Entitlements	161,500
357	Local Gov't Capital & Operating Grants	7,553
361	Charges for Service	32,225
362	Public Safety Charges	63,000
364	Sanitation / Recycling	17,500
380	Miscellaneous Revenue	10,000
388	Pension Contributions	32,000
392	Interfund Operating Transfers	100,000
<b>TOTAL PROJECTED REVENUE</b>		<b>2,907,928</b>

Account #	Account Title	2015 Expenses
400	Gen Gov't. / Legislative Body	13,900
401	Gen Gov't. / Executive Management	94,801
402	Gen. Gov't. / Financial Administration	39,645
403	Gen. Gov't. / Tax Collection	11,750
404	Gen. Gov't. / Solicitor, Legal Services	62,000
405	Gen. Gov't. / Secretary - Clerks	44,125
406	Gen. Gov't. / Office Administration	62,728
407	Gen. Gov't. / IT Computer Networking Services	6,000
408	Gen. Gov't. / Engineering Services	20,000
409	Gen. Gov't. / Government Buildings	38,500
410	Police	1,143,766
411	Fire	172,390
413	UCC & Code Enforcement	13,965
414	Planning/Zoning	52,500
415	Emergency Management	6,600
426	Recycling Collection & Disposal	29,400
430	PWD Gen. Services - Administration	203,614
431	Street Cleaning	6,000
432	Snow & Ice Removal	42,500
433	Traffic Signs, Signals and Markings	9,300
434	Street Lighting	70,000
436	Storm Water Sewer & Drains	50,000
437	Equipment /Machinery / Tools - Maint. & Repairs	64,950
438	Maintenance & Repairs - Roads and Bridges	8,500

**NORTH CORNWALL TOWNSHIP, LEBANON COUNTY, PA.  
2015 GENERAL FUND BUDGET**

Account #	Account Title	2015 Expenses
451	Recreation Administration	6,422
452	Participant Recreation	3,200
454	Parks	133,300
456	Libraries	8,000
459	Culture - Organizations	2,000
461	Conservation of Natural Resources	5,000
471	General Obligation Note	75,635
484	Workers Compensation Insurance	75,720
486	Insurance	72,164
489	Miscellaneous Expenses	2,000
492	Interfund Operating Transfers	257,553
	<b>TOTAL PROJECTED EXPENDITURES</b>	<b>2,907,928</b>

**2015 GENERAL FUND BUDGET**

	<b>TOTAL PROJECTED REVENUE</b>	<b>2,907,928</b>
	<b>TOTAL PROJECTED EXPENDITURES</b>	<b>2,907,928</b>
	<b>ENDING BALANCE</b>	<b>0</b>

**NORTH CORNWALL TOWNSHIP, LEBANON COUNTY, PA.  
2015 SEWER FUND BUDGET**

Account #	Account Title	2015 Revenues
100	Utilization of Cash Reserve	230,000
341	Interest Earnings	2,800
364	Sanitation	398,500
<b>TOTAL PROJECTED REVENUE</b>		<b>631,300</b>

Account #	Account Title	2015 Expenses
402	Financial / Administrative	8,200
404	Legal Services	7,500
406	Office Administration	900
407	IT Computer Services	3,000
408	Engineering Services	51,000
409	Buildings and Stations	30,700
410	Public Safety	1,000
429	Wastewater Collection	425,300
486	Insurance	2,200
489	Miscellaneous Expenses	1,500
492	Interfund Operating Transfers	100,000
<b>TOTAL PROJECTED EXPENDITURES</b>		<b>631,300</b>

**2015 SEWER FUND BUDGET**

	<b>TOTAL PROJECTED REVENUE</b>	<b>631,300</b>
	<b>TOTAL PROJECTED EXPENDITURES</b>	<b>631,300</b>
	<b>ENDING BALANCE</b>	<b>0</b>

**NORTH CORNWALL TOWNSHIP, LEBANON COUNTY, PA.  
2015 STATE FUND BUDGET**

Account #	Account Title	2015 Revenues
100	Utilization of Cash Reserve	86,747
341	Interest Earnings	400
355	State Shared Revenues / Entitlements	229,800
357	Local Government Revenues	7,553
393	Proceeds of Long-Term Debt	600,000
	<b>TOTAL PROJECTED REVENUE</b>	<b>924,500</b>

Account #	Account Title	2015 Expenses
432	Winter Maintenance / Snow Removal	35,000
433	Traffic Control Devices	4,000
437	Equipment /Machinery / Tools - Maint. & Repairs	15,000
438	Maint./ Repair of Roads and Bridges	34,000
439	Hwy Construction and Rebuilding Projects	836,500
	<b>TOTAL PROJECTED EXPENDITURES</b>	<b>924,500</b>

**2015 STATE FUND BUDGET**

	<b>TOTAL PROJECTED REVENUE</b>	<b>924,500</b>
	<b>TOTAL PROJECTED EXPENDITURES</b>	<b>924,500</b>
	<b>ENDING BALANCE</b>	<b>0.00</b>

NORTH CORNWALL TOWNSHIP, LEBANON COUNTY, PA.  
2015 PARK & RECREATION FUND

Account #	Revenue	2015 Budget
100	Cash Reserve	79,000
341	Interest Earnings	150
354	State Capital and Operating Grants	0
380	Miscellaneous Revenue	0
387	Contributions from Private Sources	0
392	Interfund Operating Transfers	0
	TOTAL PROJECTED REVENUE	79,150

Account #	Expenditures	2015 Budget
454	247 · Park Maintenance - Operating Supplies	0
454	313 · Engineering Services	0
454	450 · Sub-contracted - Project Contractor Services	0
454	720 · Capital Purchase - Major Equipment	20,000
454	750 · Capital Purchase - Minor equipment	0
100	100.000 · Park & Rec. Escrow Checking	59,150
	TOTAL PROJECTED EXPENDITURES	79,150

2015 PARK & RECREATION FUND

	TOTAL PROJECTED REVENUE	79,150
	TOTAL PROJECTED EXPENDITURES	79,150
	ENDING BALANCE	0

**NORTH CORNWALL TOWNSHIP, LEBANON COUNTY, PA.  
2015 GLONINGER PARK ACCOUNT FUND**

Account #	Revenue	2015 Budget
100	Cash Reserve	250,000
341	Interest Earnings	300
354	State Capital and Operating Grants	125,000
387	Contributions from Private Sources	0
392	Interfund Operating Transfers	125,000
	<b>TOTAL PROJECTED REVENUE</b>	<b>500,300</b>

Account #	Expenditures	2015 Budget
454	313 · Engineering Services	0
454	450 · Sub-contracted - Project Contractor Services	0
454	530 · DCNR Grant Obligation (GP)	0
454	610 · Capital Construction Costs- Gloninger Park	500,000
454	720 · Capital Purchase - Major Equipment	0
454	750 · Capital Purchase - Minor equipment	0
100	100.000 · Park & Rec. Escrow Checking	300
	<b>TOTAL PROJECTED EXPENDITURES</b>	<b>500,300</b>

**2015 GLONINGER PARK ACCOUNT FUND**

	<b>TOTAL PROJECTED REVENUE</b>	<b>500,300</b>
	<b>TOTAL PROJECTED EXPENDITURES</b>	<b>500,300</b>
	<b>ENDING BALANCE</b>	<b>0</b>

**NORTH CORNWALL TOWNSHIP, LEBANON COUNTY, PA.  
2015 PENSION FUND**

Account #	Account Title	2015 Revenues
100	Utilization of Cash Reserve	0
341	Interest Earnings	5
355	State Subsidy	105,000
362	Member Contributions	32,092
380	Miscellaneous Revenue	0
393	Township MMO	114,506
	<b>TOTAL PROJECTED REVENUE</b>	<b>251,603</b>

Account #	Account Title	2015 Expenses
480	MMO Expense	251,603
	<b>TOTAL PROJECTED EXPENDITURES</b>	<b>251,603</b>

**2015 PENSION FUND**

	<b>TOTAL PROJECTED REVENUE</b>	<b>251,603</b>
	<b>TOTAL PROJECTED EXPENDITURES</b>	<b>251,603</b>
	<b>ENDING BALANCE</b>	<b>0</b>